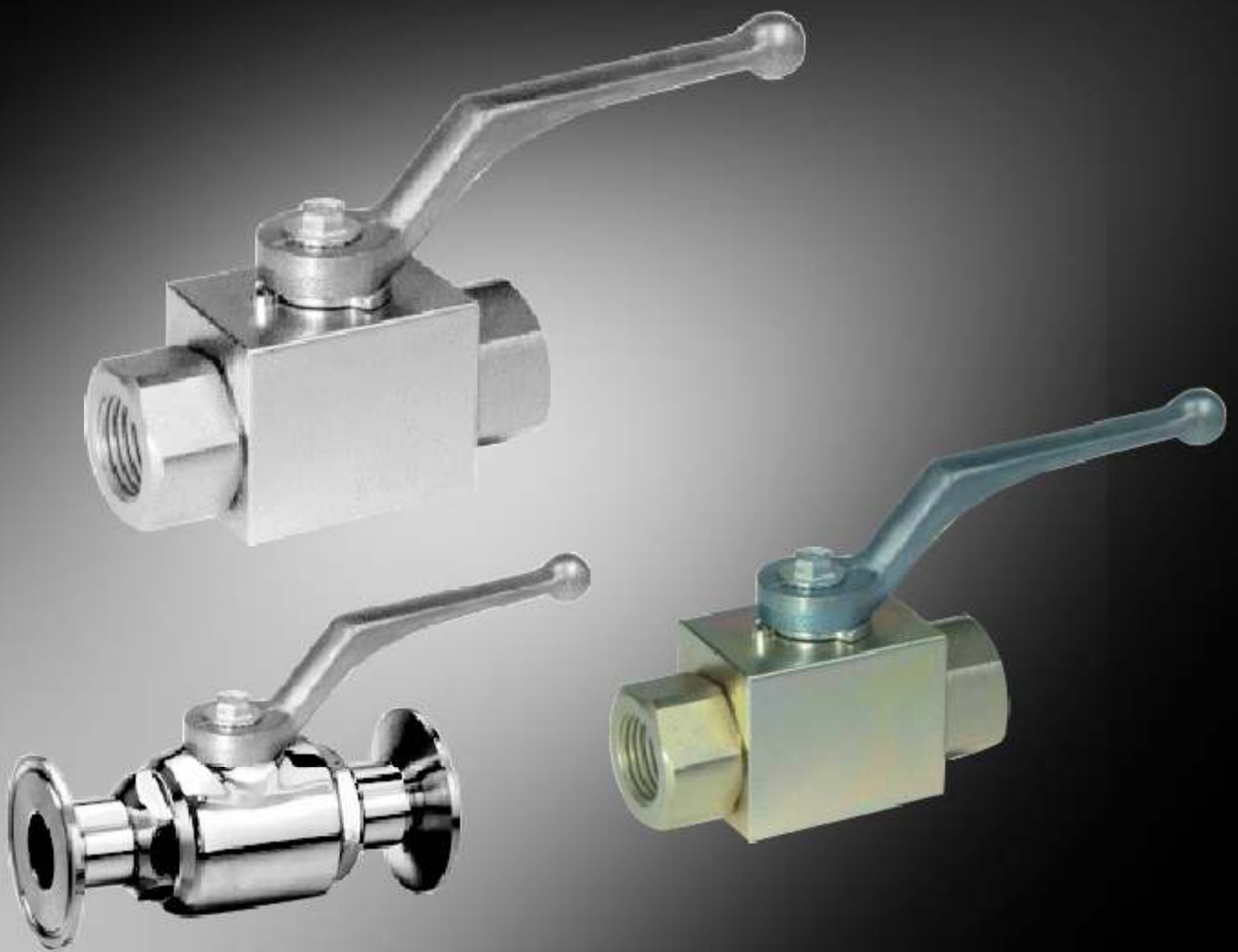




Kains



Ball Valve

Type
TC END

Features

- * Different Material for different process fluids like S S 304 / S S 316/ S S 316L
- * S S 304/ S S 316/ S S 316L Ball
- * PTFE Packing
- * 100% Factory tested
- * Clean water test at claimed pressure
- * Mounting: In line
- * Available for all Standard T C mount
- * Available in Two and three piece design, round or square body
- * Pressure up to 100 Kg/cm²



Ball valve with T C End



Screwed Ball Valves

Type
Screwed End Ball valve

Features

- * Different Material for different process fluids like S S 304 / S S 316/ S S 316L
- * S S 304/ S S 316/ S S 316L Ball
- * PTFE / Delrine Packing
- * 100% Factory tested
- * Clean water test at claimed pressure
- * Mounting: In line
- * Available in F X F / M X M
- * Available in Single, two and three piece design, round or square body
- * Pressure Up to 400 Kg/cm²



HP Ball Valve

Type
HPX Hydraulic

Features
* Available in two different surface finish

- * Ideal for Hydraulic / Earth Moving Equipments
- * M S Rust protected body
- * S S 304/ C S Ball
- * Delrine Seals
- * Lock Bush for locking
- * 100% Factory tested
- * Available in F X F / M X M



HP Ball Valve Black

Some Major Sectors that **Kains** Serves



Beverages



Pharmaceutical



Ship Building



Chemical Industry



Pulp & Paper



Cement



Power Plant



Steel Plant



Refinery



Petrochemical



Machine Tool



Bio Tech



kains Instruments India Pvt. Ltd

#9A, Jyothi Complex Road, Abbigere Main Road,
Kammagondanahalli, Jalahalli West, Bangalore-560 015
Ph:+9180 23457877, 23457887, Fax: +9180 23457867,
Email: sales@kainsindia.com

www.kainsindia.com